

Keep this page!

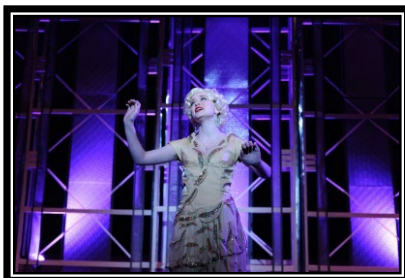
BIG FISH

CREW INFORMATION

BIG FISH PRODUCTION AT-A-GLANCE:

<p>SYNOPSIS</p>	<p>Based on the celebrated novel by Daniel Wallace and the acclaimed film directed by Tim Burton, BIG FISH tells the story of Edward Bloom, a traveling salesman, who lives life to its fullest! Edward's incredible, larger-than-life stories thrill everyone around him—most of all, his devoted wife Sandra. But their son Will, about to have a child of his own, is determined to find the truth behind his father's epic tales. Overflowing with heart and humor, BIG FISH is an extraordinary musical that's richer, funnier, and bigger than life itself.</p>		
<p>ELIGIBILITY</p>	<ul style="list-style-type: none"> ❖ Any LC student can audition for cast and/or apply for crew. You do NOT need to have any prior experience or have taken any drama class to participate. ❖ Grade eligibility and participation guidelines can be found online at www.tigerdrama.com. 		
<p>CAST & CREW LIST POSTED</p>	<ul style="list-style-type: none"> ❖ The cast and crew list will be posted via tigerdrama.com and Instagram the evening of September 30. 		
<p>CREW APPLICATIONS</p>	<ul style="list-style-type: none"> ❖ If you want to apply to work on crew, please fill out a crew application and return it to the clear crew bin behind Maguire's desk in the Green Room by September 27. 		
<p>CAST & CREW MEETING & READ THRU</p>	<ul style="list-style-type: none"> ❖ Monday October 9 (2:45-5:00) and Tuesday October 10 (2:45-5:00) HEADSHOTS and COSTUME MEASUREMENTS 	<p>NO CONFLICTS</p>	
<p>MUSIC & BLOCKING REHEARSALS</p>	<ul style="list-style-type: none"> ❖ Mon - Fri (2:45-5:00) from October 11 – November 27 ❖ Some crew members may be asked to come to selected rehearsals before crew view to assist with duties needed prior to tech. We can easily work around conflicts with these rehearsals. 		<p><i>Pre-arranged conflicts only.</i></p>
<p>CREW TECH REHEARSALS</p>	<p>SITZPROBE CREW VIEW TECH DRESS ACT I TECH DRESS ACT II DRESS REHEARSAL DRESS REHEARSAL FINAL DRESS AUDIENCE</p>	<p>Tuesday November 28 (2:45-7:00) Wednesday November 29 (2:45-7:00) Thursday November 30 (2:45-7:00) Friday December 1 (2:45-7:00) Monday December 4 (2:45-7:00) Tuesday December 5 (2:45-7:00) Wednesday December 6 (5:00-10:00)</p>	<p>NO CONFLICTS</p>
<p>BIG FISH PERFORMANCES</p>	<p>December 7-8 December 14-15 December 9 December 16</p>	<p>(5:00 call/7:00pm show) (5:00 call/7:00pm show) (12:00 call/2:00pm show) (8:00 photocall/2:00pm show)</p>	<p>NO CONFLICTS</p>

BIG FISH CREW INFORMATION



Fill out/return the attached crew application at auditions or the clear bin in the Green Room (128). Be thoughtful about your answers to the questions on the application and be sure and RANK your crew preferences!



AVAILABLE CREW POSITIONS

We are looking for an energetic, diverse group of artists and technicians to bring **BIG FISH** to life! We are especially interested in performers with eclectic backgrounds and unique artistic talents.

Dance Captain/ Assistant Choreographer	Dance captains help warm up the performers physically for each production and are in charge of helping clean numbers and make sure each performer is executing choreography correctly. Assistant choreographers also sometimes help with the construction/staging of specific numbers. Works closely with the Choreographer.
Sound Assistants	Assist with sound cues during the production and helping actors into/out of microphones and recharging batteries for each performance. They sometimes need to run backstage and solve issues during a performance. Works closely with the Sound Designer.
Light Board Operator	Runs the lights for the production and sometimes makes minor adjustments to cues while in tech rehearsals. Works closely with the Stage Manager who calls each show from the light booth.
Spotlight Operators	Highlight specific actors with light throughout scenes/songs. Requires a steady hand and ultimate focus/attention to detail. Works closely with the Stage Manager who calls each show from the light booth.
Hair & Makeup Crew	Responsible for helping cast members with makeup and specialty makeup looks and basic hair design/styling. Also responsible for maintaining wigs and hair accessories. Works closely with the Director and Designers.
Wardrobe Crew	Assist in steaming and minor repairs of costumes as well as organization each night and quick changes within the production. Wardrobe crew sets up and stores the costumes before and after the performance. Works closely with the Costume Designers.
Props Crew	Responsible for pulling/constructing/locating the props required within the show. Each night they setup the prop table and are responsible for where each prop ends up so it can be used the next night. Works closely with the Director.
Backstage/Fly Crew	Responsible for making sure scene changes and set movements happen seamlessly and efficiently. They are responsible for sometimes flying in scenery from above head and ensuring all cast/crew members are safe backstage. Our backstage crew sets up scenery prior to the show, runs the show, and then puts scenery away/stores if for the next night. Works closely with the Assistant Stage Managers.
House Managers	Responsible for the front of house experience for our audience. House Managers help ensure a quality experience and solve problems if any arise. Ushers and HM also help clean the auditorium following the production. Works closely with STAGE parents.

BIG FISH

CREW APPLICATION

CHECK THE APPROPRIATE BOX

- Auditioning as well
- Applying for Crew ONLY

Please complete and return this application/conflict list to the clear bin in the Green Room (128) by **Wednesday, September 27 by 5:00pm.**

PRINT YOUR CLASS SCHEDULE:

Name _____

Cell _____ Grade _____

1	Teacher	Current Grade	Rank (1-9) your top (1) to lowest (9) Crew preferences. Indicate you do not want to work on a crew by ranking 'NO' in the appropriate box.		
	Subject				
2	Teacher	Current Grade	<h2 style="text-align: center;">BIG FISH</h2> <p style="text-align: center;">I HAVE READ THE ATTACHED INFO ABOUT BEING ON A CREW AND THE RESPONSIBILITIES THAT ENTAILS.</p> <p style="text-align: center;">(circle one)</p> <p style="text-align: center;">YES NOT YET</p>	CREW POSITION:	RANK 1-9:
	Subject			Dance Captain/ Assistant Choreographer	
3	Teacher	Current Grade		Sound Assistants	
	Subject			Light Board Operator	
4	Teacher	Current Grade		Spotlight Operators	
	Subject			Hair/Makeup Crew	
5	Teacher	Current Grade		Wardrobe Crew	
	Subject			Props Crew	
6	Teacher	Current Grade		Backstage/Fly Crew	
	Subject			House Managers	
0	Teacher	Current Grade			
	Subject				

Please list your experience as it relates to the crew position(s) you are interested in.

What qualities do you possess that would make you a valuable addition to this production?

Our crews have specific duties to help with the rehearsal process and make sure everything is ready for dress rehearsals. These jobs can typically be done between 2:45-5:00.

Signature indicates you have read this form and the crew descriptions and understand the requirements, rehearsal commitments and performance commitments for a crew position.

STUDENT SIGNATURE: _____

PLEASE LIST ALL CONFLICTS ON THE BACK OF THIS FORM. Understand some rehearsals are *required*. **NO CONFLICTS** on these dates.

BIG FISH SEPTEMBER 2023

SUN	MON	TUE	WED	THR	FRI	SAT
24	◇25	◇26	◇27	◇28	◇29	30
	AUDITIONS	AUDITIONS	CALL BACKS CREW APPLICATIONS DUE	CALL BACKS	CALL BACKS	CAST AND CREW LIST POSTED

BIG FISH OCTOBER 2023

1	◇2	◇3	◇4	◇5	◇6	7
	Selected Music Rehearsals	Selected Music Rehearsals	Selected Music Rehearsals OPENING NIGHT DRESS	Selected Music Rehearsals OPENING NIGHT 7:00	Selected Music Rehearsals	
8	●9	●10	◇11	◇12	◇13	14
	ALL CAST AND CREW READ THRU	ALL CAST AND CREW HEADSHOTS & COSTUME MEASUREMENTS	Music Rehearsal	Music Rehearsal	PLID NO SCHOOL	
15	◇16	◇17	◇18	◇19	◇20	21
	Staging	Staging	Staging	Staging	Staging	
22	◇23	◇24	◇25	◇26	◇27	◇28
	Staging	Staging	Staging	Staging	Staging	INTAF

BIG FISH NOVEMBER 2023

29	◇30	◇31	◇1	◇2	◇3	4
	Staging	Staging	Staging	Staging	Staging	
5	◇6	◇7	◇8	◇9	◇10	11
	Staging	Staging	Staging	Staging	NO SCHOOL Staging	
12	◇13	◇14	◇15	◇16	OFFBOOK ◇17	◇18
	Act I Stumble	Act I Stumble	Act II Stumble	Act II Stumble	Problem Spots TBA	BIG FISH PROMO PHOTOS TBA
19	◇20	◇21	22	23	24	25
	Full Cast Musical Number Review	Problem Spots TBA	THANKSGIVING	THANKSGIVING	THANKSGIVING	THANKSGIVING

BIG FISH DECEMBER 2023

26	●27	●28	●29	●30	●1	2
	Full Cast Review	SITZPROBE 2:45-7:00	CREW VIEW 2:45-7:00	TECH ACT I 2:45-7:00	TECH ACT II 2:45-7:00	
3	●4	●5	●6	●7	●8	●9
	BIG FISH DRESS TECH 2:45-7:00	BIG FISH DRESS TECH 2:45-7:00	Show 'n Tell BIG FISH DRESS TECH 5:00-10:00	BIG FISH 5:00 call 7:00 show	BIG FISH 5:00 call 7:00 show	BIG FISH 12:00 call 2:00 show
10	11	12	13	●14	●15	●16
				BIG FISH 5:00 call 7:00 show	BIG FISH 5:00 call 7:00 show	BIG FISH 8:00 call 2:00 show

BIG FISH

**CAST/CREW &
STAGE MANAGER
REHEARSALS AND
CONFLICTS**

LIST ALL CONFLICTS

with any
potential after-
school rehearsals
(signified by a ◇)
AND
REQUIRED DATES
(signified by a ●).

Some crew
members may
be asked to
come to
selected
rehearsals before
crew view to
assist with duties
needed prior to
tech.

**CONFLICTS:
DATE / REASON**