

2018  
Summer Camps!

**SCT** SPOKANE'S  
OLDEST  
THEATRE

EST. 1946

**YOUTH CAMPS**

9am - 3pm



**JUNE 18-22**

Rooooaar! Who will help George save the Kingdom of Silence from the terrifying Dragon? This adventure will require strength, courage, bravery, and Music! This classic story is perfect for your little ones to find their theatre bug.

(Ages 5 - 7)

Early Registration \$175 until 5/28  
\$200 registration closes 6/4



**JULY 9-13**

Fe Fi Fo Fum, I smell a show that is lots of fun! Come climb the beanstalk to the clouds with Jack on a musical adventure with a talking harp and a hen that lays a golden egg. Learn to act, sing, and dance through this magical tale.

(Ages 8 - 12)

Early Registration \$175 until 6/18  
\$200 registration closes 6/25



**JUNE 25-29**

Ahh this show is just right! Are you curious like Goldilocks and want to learn how to act, sing, and dance? Then come join us this summer as we bring to life this classic story, and learn some valuable life lessons along the way.

(Ages 8 - 12)

Early Registration \$175 until 6/4  
\$200 registration closes 6/11



**JULY 30 - AUGUST 3**

Follow Hansel and Gretel into the center of the forest. Come help bring this classic Grimm Fairytale to life this summer through acting, song, and dance. But beware of the witches' house. It may look delicious, but looks can be deceiving.

(Ages 10 - 13)

Early Registration \$175 until 7/9  
\$200 registration closes 7/16

**TEEN CAMP**

9am - 5pm



**Les Misérables**

(Ages 13 - 18)

Part Auditions June 4th & June 5th  
\$275 by June 5th

**AUGUST 6-17** Do You Hear the People Sing?

Come be a part of one of the most beloved musicals of all time. Based on the classic novel written by Victor Hugo, this Tony Award Winning Musical is also known as one of the longest running shows on Broadway and The West End. Join Jean Valjean, Javert, Fantine, Eponine, Cosette, Marius, Enjolras, and The Thenardier's in this beautiful story of love, redemption, and sacrifice. Music and Lyrics by Claude-Michel Schönberg, Alain Boublil, and Herbert Kretzmer.

[www.SpokaneChildrensTheatre.org](http://www.SpokaneChildrensTheatre.org)

2727 N. Madelia, Suite 5 - Spokane, WA 99207

**PLAYBILL**

LEWIS & CLARK TIGER DRAMA

**THE THEORY**  
of  
*Relativity*

MUSIC & LYRICS BY NEIL BARTRAM  
BOOK BY BRIAN HILL

THE THEORY OF RELATIVITY is presented by special arrangement with Music Theatre International (MTI), New York.

HOW DO WE **CONNECT**  
IN A MODERN WORLD?

**April 19-20** **7:00 pm**

[WWW.TIGERDRAMA.COM](http://WWW.TIGERDRAMA.COM)

# Lewis & Clark High School

presents:

## Closing Night

Join us for this fundraiser celebrating this season and our students. In addition to performances and awards, we will also be announcing our **2018-2019 Tiger Drama Season**

**Thursday May 31**  
**7:00pm**

**7<sup>th</sup> Annual Tiger Drama**  
*New Student & Alumni Picnic*

**Bring your family & friends to meet past, present, & future Tiger Drama Students.**  
**We look forward to meeting you and welcoming you into our Tiger Drama family!**

**Saturday August 25**  
**4:00-6:00pm - Comstock Park**

THEATRE & the ARTS

## DID YOU KNOW?



"In **THEATRE**, you have the power to **BRING VOICE** to those who have been **MARGINALIZED, DISCRIMINATED AGAINST, LEFT OUT, OVERLOOKED, OR SILENCED.**"

-Dr. Monique M. Chism, Assistant Secretary for Policy and Programs, U.S. Department of Education, speaking at the 2016 EdTA National Conference

# 98%

of school administrators believe that **THEATRE** programs strengthen student's **CRITICAL THINKING, COLLABORATION, COMMUNICATION,** and **LEADERSHIP** skills.

-2012 EdTA-Utah State University Survey of Theatre Education Programs in U.S. High Schools

For more facts about the value of theatre education go to [schooltheatre.org/advocacy](http://schooltheatre.org/advocacy)





**STAGE's many activities include:**

- Providing funding for the theatre program for supplies and services not covered by School District 81
- Funding scholarships for students whose families are unable to pay for competition travel expenses, production packs, or other items needed to participate fully in the theatre program.
- Supplying chaperones to all school-sponsored off-campus competitions and performances.

STAGE's goals are to promote and foster clear, concise, and timely communications between the LC Theatre Director, the Board of Directors, and the parents/guardians of all theatre students.

For more information, contact our Tiger STAGE Board at [tigerstagegroup@gmail.com](mailto:tigerstagegroup@gmail.com)

**Average LCHS musical budget: \$15,800**

**Here's how it breaks down:**

<b>Support Staff</b> - Industry professionals paid to mentor our students. This includes sound and lighting designers, choreographer, and vocal directors .....	<b>\$5000</b>	32%
<b>Royalties</b> .....	<b>\$2500</b>	16%
<b>Musicians</b> - Additional professionals to make sure students have a solid foundation for their voice work.....	<b>\$2500</b>	16%
<b>Set Materials</b> .....	<b>\$2000</b>	12%
<b>Equipment Rentals</b> .....	<b>\$1500</b>	9%
<b>Costumes</b> .....	<b>\$1000</b>	8%
<b>Props</b> .....	<b>\$500</b>	3%
<b>Publicity and Programs</b> .....	<b>\$500</b>	3%
<b>Dry Cleaning</b> .....	<b>\$200</b>	1%

**TIGER DRAMA**

**THE THEORY**  
*Relativity*

Music and Lyrics by **Neil Bartram**

Book by **Brian Hill**

*Director and Musical Director*

*Department Director and Choreographer*

Nathan Patrick Nelson

Greg Pschirrer

*Student Director and Stage Manager*

Claire Woodard

*The Theory of Relativity Company*

Micaela Ackermann	Miranda Anthony Miller	Audrey Bensching
Noel Case	Erin Chaves	Bethany Daniel
Tatyanah Edgar	Darby Fitzgerald	Lydia Fout
Ethan Goins	Maleah Harshman	Emma Hendricks
Vanessa Kaufman	Alexandra Lewis	Iaine Mackay
Taiyanna Pereira	Piper Quimby (Burney)	Trevor Rau
Matthew Read	Madison Rhodes	Gunnar Rorholm
	Jordan Santiago	
<i>Program Design</i>	<i>Videographer</i>	<i>Sound Design/Headshots</i>
Theresa Meyer	Richard Maguire	Scott Martinez
<i>Lighting Design</i>	<i>Light Design Mentor</i>	<i>Costumers</i>
Emma Hendricks & Gunnar Rorholm	Ethan Goins	Lisa Caryl-Vukas & Pauletta Caryl

*The Theory of Relativity* is presented through special arrangement with Music Theatre International

**THE THEORY**  
*Relativity*  
 Crew

Director & Musical Director ..... Nathan Patrick Nelson  
 Department Director & Choreographer..... Greg Pschirrer  
 Production Assistant..... Suzanne Maguire  
 Student Director & Stage Manager..... Claire Woodard\*  
 Costumer ..... Lisa Caryl-Vukas  
 Costumer ..... Pauletta Caryl  
 Costume Crew Head ..... Rae Baer  
 Costume Crew ..... Sarah Gores  
 Costume Crew ..... Molly Herzog  
 Lighting Designer ..... Emma Hendricks\*  
 Lighting Designer ..... Gunnar Rorholm\*  
 Lighting Mentor ..... Ethan Goins\*  
 Lighting Operator ..... Cecilia Kelly  
 Spotlight Operator ..... Hannah Summers\*  
 Spotlight Operator ..... Kaylee Westbrook\*  
 Hair/Makeup Crew Head ..... Jersey Kull  
 Hair/Makeup Crew ..... Nicki Haney  
 Hair/Makeup Crew ..... M.E. Martin\*  
 Sound Assistant ..... Ryland Saggau\*  
 House Manager ..... Eli Svoboda  
 House Manager ..... Gus Aguilar  
 Usher ..... Cameron Hernandez  
 Usher ..... Luis Mai  
 Usher ..... Jady Malone  
 Usher ..... Genevieve Schmidt

\*Member of International Thespian Troupe 6356



**THANK YOU**

for your support of LC Tiger Drama.  
 Please help us to support ALL students who  
 want to be involved in LCHS theatre arts.  
 See our lobby display for information on the  
 Tiger STAGE parent group and find out how  
**YOU, YOUR BUSINESS or YOUR  
 ORGANIZATION**  
 can become a sponsor.

**LC Tiger Drama Sponsorship**

- **Producer: \$1,000** – Contribute to the rights for a play.
- **Director: \$500** – Help replace lighting equipment.
- **Star: \$250** – Assist with purchasing stagecraft supplies.
- **Cast: \$100** – Add scripts to the theatre library, a valuable classroom resource.
- **Crew: \$50** – Sponsor guest teachers who are experts in their fields.

Email: [Tigerstagegroup@gmail.com](mailto:Tigerstagegroup@gmail.com)



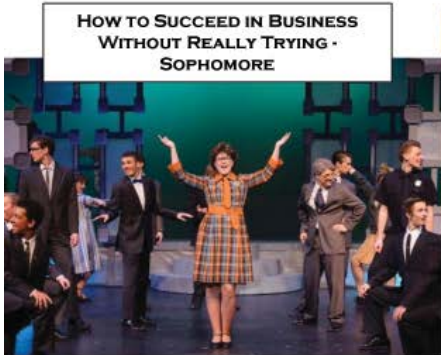
**TigerSTAGE**



L  
C  
H  
S  
CLASS OF  
2018

*Congratulations*  
**CLAIRE WOODARD**  
*on all of your hard work and accomplishments. We have thoroughly enjoyed every minute watching you perform these past four years.*  
*Love, Your Best Fans - Dad, Mom and Grace*

*Rodgers & Hammerstein's Cinderella – Senior Year*



**HOW TO SUCCEED IN BUSINESS WITHOUT REALLY TRYING - SOPHOMORE**



*Into the Woods-Freshman*



*Trumpet of the Swan Freshman*



**MUSIC MAN - JUNIOR**



**JAMES & THE GIANT PEACH JUNIOR**



**WIZARD OF OZ- SOPHOMORE**

# THE THEORY *of* Relativity

“A human being is part of the whole, called 'Universe'; a part limited in time and space. He experiences himself, his thoughts and feelings as something separated from the rest -- a kind of optical delusion of his consciousness.” –Albert Einstein

Now more than ever we need to take the time to connect, experience, and empathize with the stories and people that surround us. *The Theory of Relativity* explores how our stories and our paths are connected and dependent on each other. Working with such an incredible group of storytellers at LCHS has taught me about the gift of connection in theatre. Theatre allows groups of people to join together, and experience stories collectively. For we are not alone, we are all part of one body called “Universe”. We *need* to connect and listen to those around us. The more that we close our ears and our eyes to the stories around us, the more we become listless bodies wandering through space. Through understanding our connection, we become human, and we all become part of one Universe. I am nothing without you; and you are nothing without me.

**lovealmost**  
2017-2018 Season

Nathan Patrick Nelson  
Director



"We Make You Look Good"

## Instant Sign Factory

manufactures vinyl banners, decals, rigid signs, window lettering, vehicle graphics, window graphics, vehicle magnetics, event banners, sponsor signs, printed and imprinted promotional products.

## INSTANT SIGN FACTORY

721 W 2nd Ave  
Spokane, WA 99201  
Phone: 509-456-3333

[www.instantsignfactory.com](http://www.instantsignfactory.com)

## About the Production Team

### **Nathan Patrick Nelson**     *Director & Musical Director*



Nathan Patrick Nelson is thrilled to spend his student teaching experience with LC Tiger Drama. Some of his favorite stage credits include *tick...tick...BOOM!* (Jon/Musical Direction), *Mr. Burns: A Post Electric Play* (Matt/Musical Direction) and *[title of show]* (Larry/Musical direction).

### **Greg Pschirrer**     *Department Director & Choreographer*



Greg is enjoying his 14<sup>th</sup> season as Tiger Drama Department Director. He has helmed over 45 Lewis and Clark High School Tiger Drama productions. As a performer, favorite credits include: *The 25<sup>th</sup> Annual Putnam County Spelling Bee*, *Forever Plaid*, *Cats*, and *West Side Story*. He holds a BA in History (Gonzaga) and an MA in Theatre Production (Central Washington University).

### **Suzanne Maguire**     *Production Assistant*



Mrs. Maguire is in her 6<sup>th</sup> year working with Tiger Drama. Earning her Bachelor's in Speech Communication & Theatre from Northern Arizona University, she went on to pursue Secondary Ed while acting and directing in community theater in AZ. This year marks her last with a child at LC and she is grateful for the support and participation of Richard, Brennen, Anna & Elliott in Tiger Drama over the years.

Congratulations on 4 amazing years with Tiger Drama, Ethan!

It's been a blast watching you perform every role.

You've made us incredibly proud!

Mom, Dad,  
Kyler,  
Savannah  
And Daniel



*Break a leg Erin!  
What an amazing 4 years you've had with Tiger Drama! You have worked so hard, both on stage and in the classroom, and it shows!  
We love you very much and are so proud of you!  
Love, Dad, Mom,  
Derek, Kevin, and  
Henry*

## The Theory of Relativity Company

**Gunnar Rorholm\*** (Class of 2020)

**Company**

Gunnar Rorholm is thrilled to be performing in his first Musical Theatre class production! Previous LC Tiger Drama appearances include: *The Music Man*, *Cinderella*, and *Almost, Maine*. He wants to thank his mom and his dad for supporting him through drama and his brother for his initial push into the Tiger Drama Family!

**Jordan Santiago\*** (Class of 2020)

**Company**

Jordan is proud to be in *The Theory of Relativity*. He appeared in LC's *James and the Giant Peach* (James), *Cinderella* (Ensemble) and *Almost, Maine* (East) and the national tour of *Ragtime* (Edgar). He gives a special thanks to Pschirrer and Nelson for giving him this awesome experience.



## About the Production Team

**Claire Woodard\***

**Student Director/Stage Manager**



Claire is excited to be stage managing her last show at Lewis and Clark! Claire has been onstage in lots of productions, but she is excited to take on the new challenge of working behind the scenes on this beautiful production. She thanks her mom for being such an unwavering support, and her dad for encouraging her artistic spirit. She also thanks her enormous family for buying out half the theatre with every show they come to. Their support means the world to her.

**Lisa Caryl-Vukas**

**Costume Designer**



Lisa is happy to be back for her eighth season with Tiger Drama. She has designed costumes for many theatres in the Spokane area, as well as for 16 feature films and a television series. She received the 5<sup>th</sup> Avenue High School Musical Theatre Award for Best Costume Design in the State of Washington for last year's LC production of *The Music Man*.

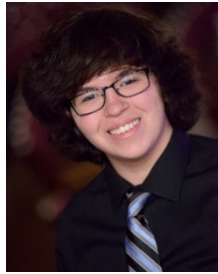
**Pauletta Caryl**

**Costume Designer**

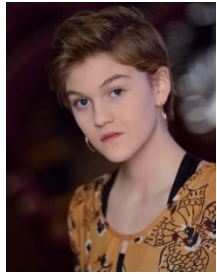


Pauletta has been building and designing costumes for the past six seasons with Tiger Drama. Her previous work has been seen in the LC productions of *Into the Woods*, *Zombie Prom*, *The Curious Savage*, *Thoroughly Modern Millie*, and *The Music Man* among others.

## The Theory of Relativity *Core*



Gus Aguilar



Rae Baer



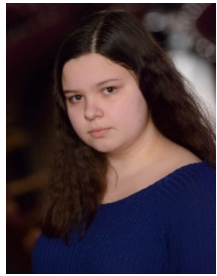
Ethan Goins



Sarah Gores



Nicki Haney



Emma Hendricks



Cameron Hernandez



Molly Herzog



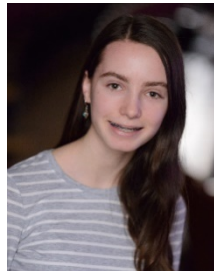
Cecilia Kelly



Jersey Kull



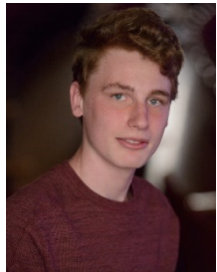
Luis Mai



Jady Malone



M.E. Martin



Gunnar Rorholm



Ryland Saggau



Genevieve Schmidt

## The Theory of Relativity *Company*

### Taiyanna Pereira (Class of 2020)

### Company

Taiyanna is excited to be in her first official play ever!! She performed in *Opening Night* 2016 and 2017 and was hooked on theater from then on. She enjoys singing, playing with her cat and spending time with her family. She wants to thank her family and friends for never giving up on her and for always believing in her dreams.

### Piper Quimby (Burney)\* (Class of 2020)

### Company

Piper is excited to be involved in this amazing show. She previously assistant stage managed *Almost, Maine* and performed in LC's *The Music Man* and *Opening Night* 2017 and *The Jungle Book* (Kaa) at SCT last year. She has been singing and performing since she was 8 years old and wants to continue throughout high school and college.

### Trevor Rau\* (Class of 2019)

### Company

Trevor first discovered this show at the beginning of the last school year, and fell in love. To be able to perform this amazing show about connection, all while connecting with those he holds dear, has been amazing. He hopes you enjoy the show, and that you remember we're nothing without one another!

### Matthew Read\* (Class of 2020)

### Company

Matthew Read is so excited to be a part of his 4th show at LC after previously appearing in *Almost, Maine*, *Cinderella*, and *The Music Man*. He has loved every minute of this production. He is incredibly grateful for the opportunities Pschirrer and Maguire have given him.

### Madison Rhodes (Class of 2020)

### Company

Madison is very exciting to be continuing her Tiger Drama experience with this amazing show. She was preciously in *The Music Man*. She dedicates this performance to her dog, who's always there for her.

## The Theory of Relativity Company

### Maleah Harshman\* (Class of 2018)

#### Company

Maleah is thrilled to be in her third LC production. Previous LC appearances include *The Music Man* and *James and the Giant Peach*. She enjoys cheerleading and making music in her spare time. She will be attending the University of San Diego next fall and dedicates her performance to her profoundly supportive mother.

### Emma Hendricks\* (Class of 2020)

#### Company

Emma is thrilled to be a part of such a gorgeous production! Previous LC appearances include *Cinderella* and *The Curious Savage*. She would like to thank her cast mates, Pschirrer, Maguire, and Mr. Nelson for "Always believing in me and pushing me to be the best artist and person I can be."

### Vanessa Kaufman\* (Class of 2018)

#### Company

Vanessa is in shock that this is her last show on the LC stage. She is thankful for all the wonderful experiences she has had in the 8 LC shows she has been apart of. She thanks her friends and her parents who have been a huge help in letting her achieve all that she is capable of. Special love to her Momma and Kaylee and thank you for always being there!

### Alexandra Lewis\* (Class of 2019)

#### Company

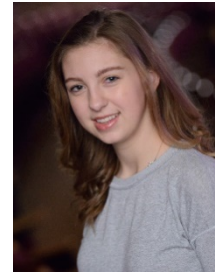
This is Alex's sixth production at LC! She has been in *Opening* and *Closing Nights*, *Cinderella*, and *Almost, Maine* (Sandrine). She has been seen in multiple productions around Spokane such as *High School Musical* (Kelsi), *Grease* (Sandy), and *Legally Blonde* (Vivienne). She would like to thank her friends and family for the support given to her.

### Iaine MacKay\* (Class of 2018)

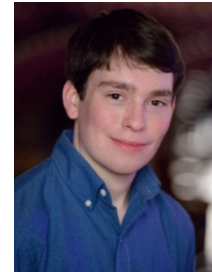
#### Company

Previous LC appearances include: *A Midsummer Night's Dream*, *How to Succeed...*, and *James and the Giant Peach*. He plans on attending a two-year mission for the LDS church and then attending BYU to study Electrical Engineering & Theatre. He dedicates his performance to Mike Cantlon and Kent Meredith who helped him find what he enjoys the most in the world.

## The Theory of Relativity Crew



Hannah Summers



Eli Svoboda



Kaylee Westbrook



Micaela:

We are so excited for your future. Never give up on your dreams. BREAK A LEG!

We love you!

Mom, Dad, Anna and Erin



Congratulations Miranda!

We are so very proud of who you are as a person and all that you have accomplished and will in the future. Stay true to yourself and passions!

Love Mom and Dad

## The Theory of Relativity Crew

### **Gus Aguilar** (Class of 2018) *House Manager*

Gus is excited to be involved with another LC Tiger Drama production. He previously worked on crew for *Cinderella*, *James and the Giant Peach*, and *The Music Man*, and most recently played Phil in *Almost, Maine*.

### **Rae Baer** (Class of 2019) *Costume Crew*

Rae Baer is excited to be back in her comfort zone, working on costumes. This is Rae's second time heading the costume department, and her 5<sup>th</sup> time in costumes on a LC Tiger Drama Production. She wants to thank her friends at NC, those working with her at LC, and of course, her family.

### **Ethan Goins\*** (Class of 2018) *Lighting Design Mentor*

Ethan is honored to be helping with lighting this production. Ethan would like to thank Bailey Heppler for always supporting his crazy light filled dreams, Emma and Gunnar, for allowing him to help them highlight this story, and Mr. Pschirrer for all the opportunities he has given him and for buying a beautiful star curtain for the shows this year.

### **Sarah Gores** (Class of 2018) *Costume Crew*

Sarah Gores is pumped to be on costumes for her fourth LC show! Steaming clothes is her passion. She has had such a blast being a part of the Tiger Drama program but is sad to see it coming to an end. Oh and...roll tigs!!!

### **Nicki Haney** (Class of 2018) *Hair/Makeup*

Nicki is excited to be working with Hair and Makeup for her fourth production at LC, she previously was involved in *The Music Man*, *James and the Giant Peach*, and *Cinderella*. She is excited to be able to participate in her final show at LC.

## The Theory of Relativity Company

### **Bethany Daniel\*** (Class of 2018) *Company*

Bethany is excited to close out her Tiger Drama journey with *Theory of Relativity*. She has enjoyed the roles in *Cinderella* (Queen) and *James and the Giant Peach* (Aunt Sponge). After graduation, she plans to become a zoologist. She thanks her family, friends and pets for being there for her throughout high school, and the department for all it has given her.

### **Tatyanah Edgar** (Class of 2018) *Company*

Tatyanah plans to pursue a career in nursing. She was previously seen on the LC stage in *Cinderella*. She enjoys spending time with friends and family as well as cheering on her LC tigers to victory. She wants to thank Pschirrer and Nelson for this wonderful opportunity! She also thanks her family for their endless support and love! Roll tigs!

### **Darby Fitzgerald\*** (Class of 2020) *Company*

Darby Fitzgerald is excited to be in her third LC production alongside her friends. Previous Shows include *The Music Man* and *Cinderella*. She has loved working backstage and onstage for Tiger Drama and is grateful for the amazing experiences she has had. She would like to dedicate this performance to her friends and family who have always supported her.

### **Lydia Fout\*** (Class of 2018) *Company*

Lydia is overjoyed to be participating in her 6<sup>th</sup> LC production, her third time on stage! She would be lost without encouragement from her friends and family. She is also so thankful for the family Pschirrer, Maguire, Mr. Nelson, and this department have built. After graduation, Lydia will be attending SFCC and working on her yoga teaching certification!

### **Ethan Goins\*** (Class of 2018) *Company*

Ethan is happy to have this be his twentieth and final production with LC Tiger Drama. Previous roles include Prince Christopher (*Cinderella*), Bud Frump (*H2\$*), and Marcellus Washburn (*The Music Man*). Ethan thanks his family for being so supportive, his friends for always laughing with him, and Pschirrer and Maguire for four years of mentorship and friendship.

## The Theory of Relativity Company

### **Micaela Ackermann\*** (Class of 2018) *Company*

Micaela has been seen in multiple LC productions, most recently *Cinderella*. She hopes to continue musical theatre in the future, with plans of attending Pacific Lutheran University this fall. She dedicates her final LC performance to "All my best friends that this department has given me. There's no one else that makes me as happy as you guys make me."

### **Miranda Anthony-Miller\*** (Class of 2018) *Company*

Miranda Anthony-Miller is ecstatic and grateful to be a part of her last show at LC. She previously stage managed *Almost, Maine*, and *The Music Man* at LC and designed the set for *The Curious Savage* at LC last season. She thanks Pschirrer, Maguire, and the rest of the cast and crew for helping her grow and being so great to work with.

### **Audrey Benschling\*** (Class of 2018) *Company*

Audrey is ecstatic to be part of her last LC show. Previous LC productions: *The Music Man*, *James and the Giant Peach*, *Cinderella* and crew for *Almost, Maine* and *Into the Woods*. She thanks Maguire and Pschirrer for all of their guidance and hard work to help herself and the department grow. And finally, thanks to the cast who continue to inspire and motivate her daily.

### **Noel Case\*** (Class of 2018) *Company*

Noel is exuberant to be in his final LC show. He has participated in thirteen LC productions and most recently directed a scene in *Almost, Maine*. He has also volunteered at Civic Theatre and is pursuing community theatre after high school. Noel is thankful for the tireless work Pschirrer, Maguire and Mr. Nelson take on to support students like him as aspiring artists.

### **Erin Chaves\*** (Class of 2018) *Company*

Erin loves this show and department and couldn't be more thankful for the opportunities they have brought her. Recent shows include *Almost Maine* (Student Director), *Cinderella* (Ensemble) and SCT's *Tarzan* (Jane). She thanks her amazing friends and mentors for being a constant support system over the past four years. "I am nothing without you!"

## The Theory of Relativity Crew

### **Emma Hendricks\*** (Class of 2020) *Lighting*

In addition to performing as part of a wonderful company, Emma is also excited to be co-lighting designer for this production. "Shout out to Gunnar and Ethan for being the best design mates anyone could ask for! Love you both!"

### **Cameron Hernandez** (Class of 2018) *Usher*

Cameron has appeared in multiple productions at Moses Lake High School including: *South Pacific*, *The Great Gatsby*, *Addams Family*, and *Alice and Wonderland*. His backstage work includes work on lighting, set construction, and backstage crew. In his spare time he enjoys playing guitar and listening to music.

### **Molly Herzog** (Class of 2018) *Costume Crew*

Molly is excited to participate in her final production at LC. She has previously worked on costume crew for *How to Succeed* and *The Music Man* and performed in *Cinderella*. She is grateful to the Tiger Drama Department for everything she has learned and all of the friendships she has made. She thanks her parents and sister for their endless support in all of her

### **Cecelia Kelly** (Class of 2019) *Light Operator*

As a high school junior Cecilia is excited for her fifth time working on lights for an LC production. Having been light board operator for *The Music Man* and light designer for two *Opening Night* productions and *Almost, Maine*, she is looking forward to another amazing Tiger Drama production!

### **Jersey Kull** (Class of 2019) *Hair/Makeup Crew*

Jersey is excited to be working on her 4<sup>th</sup> LC production! She crewed *The Music Man*, *James and the Giant Peach*, & *Cinderella* & is thrilled to be a part of the LC Tiger Drama family. She thanks Pschirrer & Maguire for giving her the opportunity to be a part of such a wonderful program. Thanks to Nicki & Ellie Haney & her loving family for their encouragement.

## The Theory of Relativity Crew

**Luis Mai** (Class of 2020)

*Usher*

Luis is excited to be working on his second Lewis and Clark High School Tiger Drama production. He looks forward to an amazing experience and working on many more productions.

**Jadyn Malone** (Class of 2021)

*Usher*

Jadyn is excited to be involved in her third LC Tiger Drama production after appearing as an ensemble member in *Cinderella* and ushering for *Almost, Maine*. She has been dancing since the age of four and loves to sing with the LC Treble choir. Jadyn would like to thank her family and friends for always encouraging her to be a part of the theater community.

**M. E. Martin\*** (Class of 2018)

*Hair/Makeup*

M.E. has been a part of eight LC productions, including costumes for *Thespian's Choice* to Stage Managing *James and the Giant Peach* and *Cinderella*. M.E. will be attending the University of New Mexico next Fall, and thanks Pschirrer, Maguire, and Boen for all of the guidance and support they have given her and for preparing her for life after high school.

**Gunnar Rorholm\*** (Class of 2020)

*Lighting Design*

Gunnar is excited to be working with Emma and Ethan to create a beautiful lighting design for *The Theory of Relativity!* He helped Ethan with lights for *James and the Giant Peach* and *Cinderella*. He'd like to thank not only Emma and Ethan, but also his brother for helping him into acting and design and his parents for their continued support in theatre!

**Ryland Saggau\*** (Class of 2018)

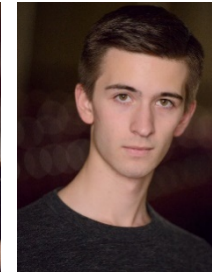
*Sound Assistant*

Ryland is proud to be a part of this production of *The Theory of Relativity*. Previous shows include *James and the Giant Peach*, *The Curious Savage*, *Cinderella*, and more. He will be graduating LC this spring and thanks Mr. Pschirrer and Mrs. Maguire for all the opportunities in the drama department.

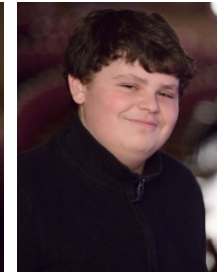
## The Theory of Relativity Company



Piper Quimby



Trevor Rau



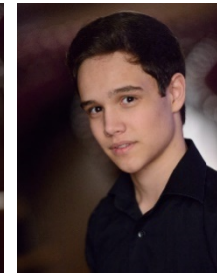
Matthew Read



Madison Rhodes



Gunnar Rorholm



Jordan Santiago

*Dear Noel:*

*It has been a real blessing to watch you perform the last 4 years! We are beyond proud of you. Remember these things:*

- ★ *"You can't use up creativity. The more you use, the more you have" - Maya Angelou*
  - ★ *"Be fearlessly authentic"*
  - ★ *"Keep calm, and keep on acting"*
- Much Love, Mom and Dad*

## The Theory of Relativity Company



Micaela Ackermann



Miranda Anthony Miller



Audrey Bensching



Noel Case



Erin Chaves



Bethany Daniel



Tatyana Edgar



Darby Fitzgerald



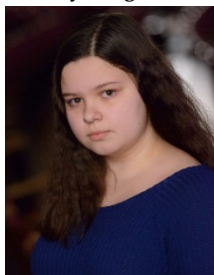
Lydia Fout



Ethan Goins



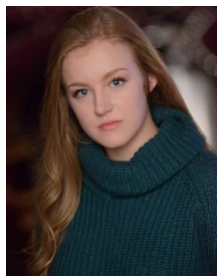
Maleah Harshman



Emma Hendricks



Vanessa Kaufman



Alexandra Lewis



Iaine MacKay



Taiyanna Pereira

## The Theory of Relativity Crew

### Genevieve Schmidt (Class of 2021)

### Usher

Genevieve is excited to usher for one of her favorite musicals. She previously ushered for LC's *Cinderella* and was part of *Opening Night* for 2017. She recently finished 'shadowing' Tzeitel in *Fiddler on the Roof* for Out of the Shadows Theatre. In her spare time she enjoys baking, dancing, and singing any musical theatre song she can.

### Hannah Summers\* (Class of 2018)

### Spotlight

Hannah is sad to see her time with Tiger Drama draw to a close, but she is grateful to work on this production. Previous tech experience includes *How to Succeed*, *The Wizard of Oz*, and *Almost, Maine*. She thanks her mother for her love & support, Pschirrer & Maguire for their patience and trust, & her fellow drama students for their constant friendship & encouragement.

### Eli Svoboda (Class of 2019)

### House Manager

Eli is really excited to get his first management position. He has worked on several LC productions in the past, including the recent *Almost, Maine*, and *Cinderella*. Eli dedicates the dutiful management of this house to the family, friends, and of course dog that has shown him unending support and love.

### Kaylee Westbrook\* (Class of 2018)

### Spotlight

Kaylee is excited and saddened to participate as a crew member in her final full LC production. She wishes to thank Pschirrer and Maguire for all the opportunities they give and her family and friends for their constant love and support.

### Special Thanks

- ❖ Marybeth Smith, LC Principal
- ❖ Diane Ackermann
- ❖ Gonzaga University VIP
- ❖ Productions - Denny Marit
- ❖ Scott Martinez
- ❖ STAGE parents
- ❖ Richard Maguire
- ❖ Leah Croteau, LC

# THE THEORY *Relativity*

## *Company*

Micaela Ackermann\*  
 Miranda Anthony Miller\*  
 Audrey Bensching\*  
 Noel Case\*  
 Erin Chaves\*  
 Bethany Daniel\*  
 Tatyana Edgar  
 Darby Fitzgerald\*  
 Lydia Fout\*  
 Ethan Goins\*  
 Maleah Harshman\*  
 Emma Hendricks\*  
 Vanessa Kaufman\*  
 Alexandra Lewis\*  
 Iaine MacKay\*  
 Taiyanna Pereira  
 Piper Quimby (Burney)\*  
 Trevor Rau\*  
 Matthew Read\*  
 Madison Rhodes  
 Gunnar Rorholm\*  
 Jordan Santiago\*

# THE THEORY *Relativity*

*The Theory of Relativity* is presented without intermission.

Person A ..... Company  
 Relativity ..... Company  
 I'm Allergic to Cats..... Noel  
 Cake (Part 1)..... Audrey  
 Pi (Part 1)..... Iaine  
 The End of the Line..... Micaela and Alexandra  
 Great Expectations ..... Maleah, Matthew, and Company  
 Footprint..... Gunnar  
 Cake (Part 2)..... Audrey  
 Pi (Part 2)..... Iaine  
 Lipstick ..... Bethany & Matthew  
 Apples & Oranges ..... Ethan and Trevor  
 Me & Ricky..... Tatyana, Piper, Maleah, and Vanessa  
 Promise Me This..... Madison  
 Cake (Part 3)..... Audrey  
 Pi (Part 2 1/2)..... Iaine  
 Julie's Song ..... Erin  
 Pi (Part 3)/Relativity (Reprise 2)..... Iaine & Company  
 Relative Pitch ..... Company  
 You Will Never Know ..... Jordan, Piper, Ethan, and Company  
 Manicure..... Darby  
 Nothing Without You..... Company